

Purpose-built for productivity.

AutoCAD[®]

Architecture

Autodesk[®]

AutoCAD Architecture software is AutoCAD for architects

Gain immediate productivity and smooth collaboration within a software environment you already know.

Immediate Productivity

If you are an architect who knows AutoCAD® software, you can start using AutoCAD® Architecture software with minimal training to create drawings, documentation, and schedules faster. Purpose-built with architects in mind, AutoCAD Architecture automates tedious drafting tasks to help reduce errors and increase efficiency. As you work, you can discover new and useful features at your own pace.

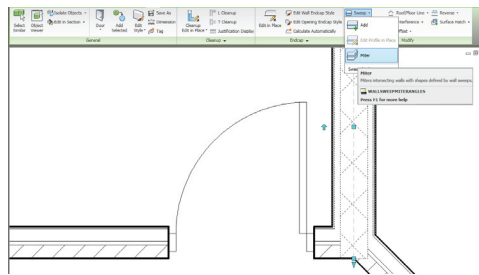
Smooth Collaboration

Easily share designs and project information with clients and members of your extended project team. Use integrated rendering tools to create contextualized design visualizations for clear client communication and accelerated approvals. Rely on industry-leading DWG™ technology to exchange information with colleagues. Expedite project review cycles by publishing files directly to DWF™ or DWFx formats. And exchange files with mechanical, electrical, and plumbing engineers and structural engineers who use other AutoCAD-based and IFC 2x3 certified programs.

Key Features in AutoCAD Architecture

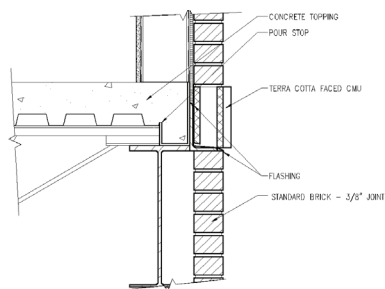
Familiar User Environment

AutoCAD Architecture features a streamlined user interface. Find your favorite tools and commands faster, locate lesser-used tools more efficiently, and discover relevant new features more easily. The result is less time searching through menus and toolbars, and more time getting your work done.



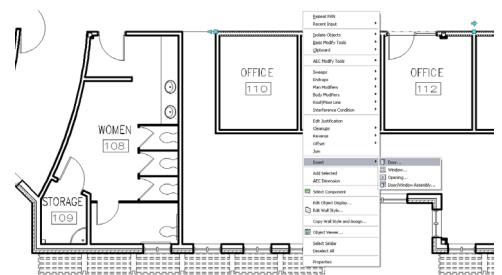
Details

AutoCAD Architecture software includes a comprehensive library of detail components and keynoting tools. Fully automate the creation of details to ensure appropriate, consistent annotations, and save time and effort spent on tedious documentation and design annotations. When you are ready, generate keynote legends quickly and easily.



Walls, Doors, and Windows

Draw and document typical building elements such as walls, doors, and windows. Draw wall layouts that reflect actual construction. Modify walls and their endcap conditions on a component level for improved handling of common wall conditions, such as angled, cornered, or intersecting fire-rated walls. Automatically insert and place doors or windows with complete placement control. Move any wall, and all connected walls and spaces automatically update. Use familiar AutoCAD® commands such as Fillet and Chamfer.

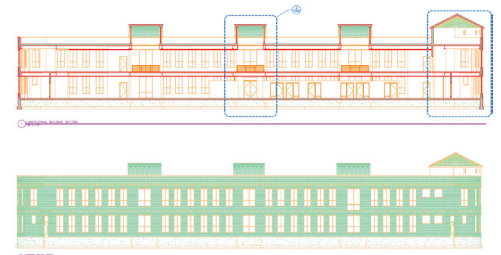


Spaces

Automatically tag every room in a drawing, complete with room areas. As room boundaries change, you can easily update spaces, causing tags and areas to refresh, maintaining accurate documentation.

Sections and Elevations

Generate 2D sections and elevations with material hatching, directly from your floor plans. If your design changes, fully updated section and elevation graphics are generated, maintaining layer, color, linetype, and other properties.



The power to be productive

Get all the functionality of AutoCAD software, plus tools designed specifically for architectural drawing, design, collaboration, and documentation.

Scheduling

Customize the appearance of out-of-the-box schedule styles to meet company standards or create new schedules from scratch, complete with required calculations, with ease. Schedules are linked directly to your designs, enabling you to update them to reflect any design changes with the click of a button.

BLOCK	DOOR AND FRAME SCHEDULE										NOTES				
	DOOR			LOOKOVER			FRAME			HARDWARE					
MARK	SIZE	THK	MATL	GLAZING	WVD	HGT	MATL	EL	HEAD	JAMB	SILL	FIRE RATING LABEL	SET NO	KEYSIDE RM NO	
1	3000	1-5/8"	60	---	0	0"	---	A	5/162	2/162	1/162	---	1	---	STOP AT TOP OF DOOR between the end lock and lock edge.
2	3000	1-5/8"	60	---	0	0"	---	B	5/162	2/162	1/162	---	---	---	STOP AT TOP OF DOOR between the end lock and lock edge.
3	3000	1-5/8"	60	---	0	0"	---	C	5/162	2/162	1/162	---	---	---	STOP AT TOP OF DOOR between the end lock and lock edge.
4	3000	1-5/8"	60	---	0	0"	---	D	5/162	2/162	1/162	---	---	---	STOP AT TOP OF DOOR between the end lock and lock edge.
5	3000	1-5/8"	60	---	0	0"	---	E	5/162	2/162	1/162	---	---	---	STOP AT TOP OF DOOR between the end lock and lock edge.
6	3000	1-5/8"	60	---	0	0"	---	---	---	---	---	---	---	---	STOP AT TOP OF DOOR between the end lock and lock edge.
7	3000	1-5/8"	60	---	0	0"	---	---	---	---	---	---	---	---	STOP AT TOP OF DOOR between the end lock and lock edge.
8	3000	1-5/8"	60	---	0	0"	---	---	---	---	---	---	---	---	STOP AT TOP OF DOOR between the end lock and lock edge.
9	3000	1-5/8"	60	---	0	0"	---	A	5/162	2/162	1/162	---	---	---	STOP AT TOP OF DOOR between the end lock and lock edge.

Rendering

Bring designs to life for client presentations at any stage of the design with integrated rendering. The streamlined visualization capabilities are fully integrated into the AutoCAD Architecture workflow. Make your presentations stand out by visually communicating richer design information. Extend rendering capabilities even further using the FBX file format to export designs to modeling and animation software such as Autodesk 3ds Max Design.

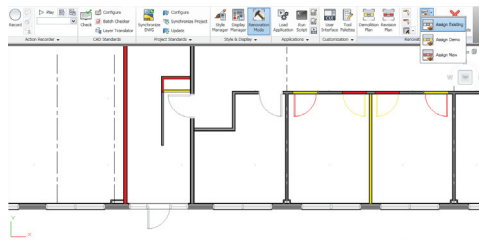


Dimensioning

Greater flexibility in AutoCAD Architecture enables you to dimension any wall—and all its components, including wall stud centerlines and faces—according to your own dimensioning standards. And since the dimensions are associative, they automatically update as your designs change, eliminating the tedium of many manual updates.

Renovation Documentation Tools

Speed the design and production of renovation projects with tools to help create correct representations of existing, new, and demolition plans. AutoCAD Architecture renovation documentation tools enable you to assign objects to different renovation categories, and then change these assignments at any time. Using a single revision plan helps you switch between renovation, demolition, and revision plans more quickly and avoid the need to create and maintain redundant data sets.



AutoCAD® Revit® Architecture Suite— for Maximum Flexibility and Advantage

Combining AutoCAD, AutoCAD Architecture, and Autodesk® Revit® Architecture software applications into a single, comprehensive package, the AutoCAD® Revit® Architecture Suite software allows you to transition to building information modeling (BIM), while protecting your legacy software, training, and design data investments. Purpose-built for BIM, Autodesk Revit Architecture delivers a powerful, competitive advantage by speeding creative design work, facilitating analysis for sustainable design, and automatically delivering coordinated, consistent documentation. Support ongoing work in either AutoCAD or AutoCAD Architecture while you make the switch to BIM with Autodesk Revit Architecture, at your own pace.

AutoCAD Architecture Success Story Whitney Architects, Inc.

Since 1984, interior architecture firm Whitney Architects has delivered a broad range of technical and design services for large corporations, financial services firms, and hospitality providers. Whitney adopted AutoCAD Architecture software to better provide this diverse blend of services and to foster improved collaboration.

Before moving to AutoCAD Architecture, Whitney experienced difficulty sharing files with consultants, and required a great deal of support from their previous CAD vendor. According to Stephen Bures, president of Whitney Architects, "We consistently ran into trouble training new employees. They were familiar with AutoCAD, but none of them knew our previous CAD application, resulting in a steep learning curve and increased costs. That was a big part of our decision to make the switch."

Since adopting the software, Whitney has completed almost 600 major construction projects more productively and accurately than possible with its previous CAD software. "Right out of the box," says Bures, "AutoCAD Architecture helped us save roughly 35 percent in time spent on drawings." Collaboration with mechanical, electrical, and plumbing engineers as well as structural engineers and other consultants has improved significantly, too. "Our drawings are much better with AutoCAD Architecture, not only because the quality control process is easier, but also because the interface with all of our consultants and clients is easier and more exact. As a result, we save time on projects," adds Bures.

Right out of the box AutoCAD Architecture helped us save roughly 35 percent in time spent on drawings.

—Stephen Bures
President
Whitney Architects

Learn More or Purchase

Access specialists worldwide who can provide product expertise, a deep understanding of your industry, and value that extends beyond your software purchase. To purchase AutoCAD Architecture software, contact an Autodesk Premier Solutions Provider or Autodesk Authorized Reseller. Locate a reseller near you at www.autodesk.com/reseller.

Autodesk Learning and Education

From instructor-led or self-paced classes to online training or education resources, Autodesk offers learning solutions to fit your needs. Get expert guidance at an Autodesk Authorized Training Center (ATC®) site, access learning tools online or at your local bookstore, and validate your experience with Autodesk certifications. Learn more at www.autodesk.com/learning.

Autodesk Services and Support

Accelerate return on investment and optimize productivity with innovative purchase methods, companion products, consulting services, and support from Autodesk and Autodesk authorized partners. Designed to get you up to speed and keep you ahead of the competition, these tools help you make the most of your software purchase—no matter what industry you are in. Learn more at www.autodesk.com/servicesandsupport.

Autodesk Subscription

Autodesk® Subscription gives you immediate access to software upgrades and exclusive access to service and support benefits designed to help you get the most out of your Autodesk software. Learn more at www.autodesk.com/subscription.

Phoenix Convention Center, designed by Populous. Photo © Christy Radecic 2009

*Free products are subject to the terms and conditions of the end-user license agreement that accompanies download of this software.

Autodesk, ATC, AutoCAD, DWF, DWG, and Revit are registered trademarks or trademarks of Autodesk, Inc., and/or its subsidiaries and/or affiliates in the USA and/or other countries. All other brand names, product names or trademarks belong to their respective holders. Autodesk reserves the right to alter product offerings and specifications at any time without notice, and is not responsible for typographical or graphical errors that may appear in this document.

© 2010 Autodesk, Inc. All rights reserved. BR0B1-000000-MZ30