

Text Size Too Small or Large In an Existing Drawing or Project?

All Electrical Designer Users

You may have completed a project and submitted it for approval to your client. The client has come back and stated that they are not happy with the text size. What can be done?

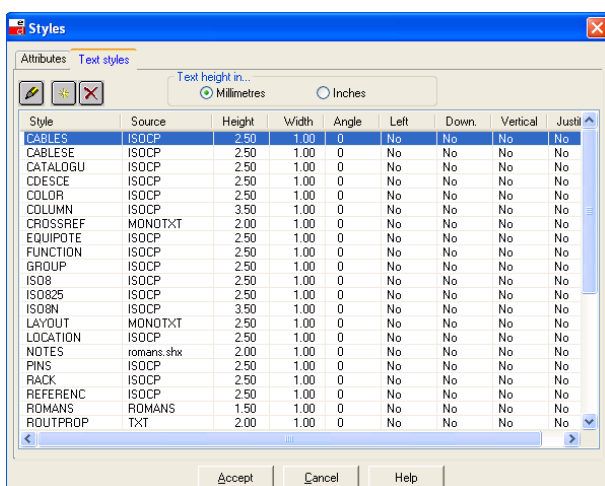
In this example let's assume the text size is the SNA (sequential numbering association) of the symbols.

From the Main Manager, select the option  *Configure*

Select *Text Styles*

Browse down the list of *Attributes* and you will note that the attribute SNA is on the text style called SYMBOL.

Select the tab *Text Styles*



Browse down the list to Symbol and you will note that the default text height is 2.5mm

SYMBOL	ISDCP	2.50	1.00	0	No	No	No	No
--------	-------	------	------	---	----	----	----	----

Change the value to 3.5mm as an example by double-clicking on the existing text height value and select *Accept* to accept the changes.

N.B. You can also change the angle and justification so this is quite useful if you wish to differentiate the wire numbers from the symbol pin annotations!

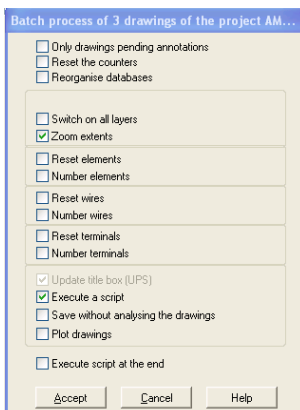
Select *Accept* until you have returned to the Main Manager

If you only want to update one drawing, simply type UPDSTYLE at the command line within the drawing. If you would like to update the entire project, then follow the next steps.

Select the *Drawings* tab from the Main Manager

Select the  *Process Drawings* command

Select the following options



Select  *Insert*

Type the name of the new file as UPDSTYLE

Select *Accept*

In the text file type where ↵ is a carriage return

UPDSTYLE↵

Select *File > Exit* and save the changes

Select *Accept* until the script starts

Your SNA text is now at 3.5mm!