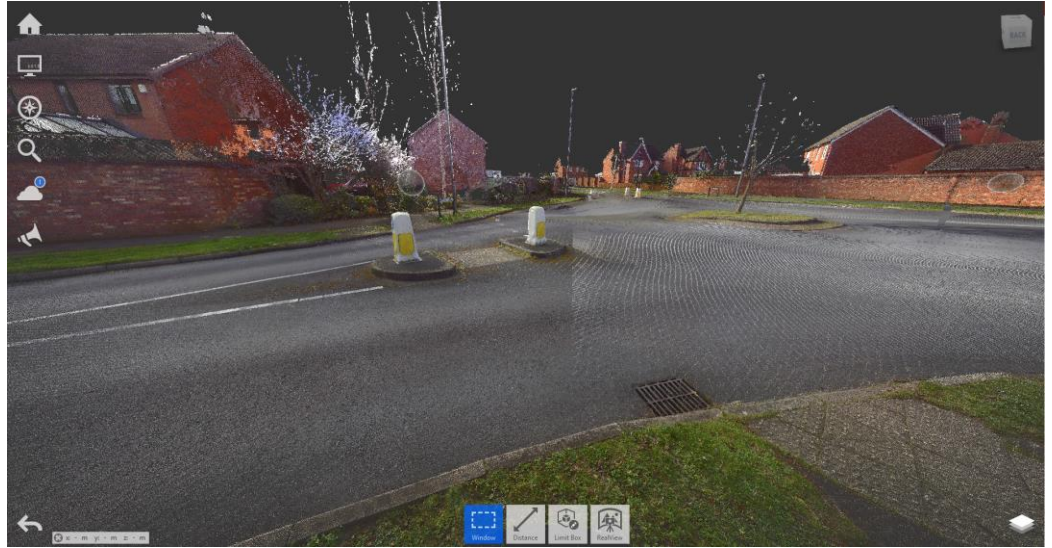




## About this Presentation

- Do you want to spend less time on site? Would you like your workers exposed to less risk? Would you like to capture more data (and never miss anything) while doing the above?
- Point Cloud models processed in ReCap 360 can be used in other Autodesk applications, unlocking powerful new workflows that reduce time spent, while increasing volume of data collected.
- This Masterclass will introduce users to common workflows to import, register, edit and then share Point Cloud with design applications like Civil 3D.



# Presentation Agenda

- Creating a Project and Importing Data
  - Creating your project
  - Importing individual scan files or folders
- Registering your Scans
  - Registration Modes
  - Accuracy Reports
- Editing Scan Data
  - Creating Regions
  - Taking Measurements
  - Data Services – Project Cleanup
- Sharing Point Clouds
  - Publish to ReCap 360
  - Attaching Point Cloud to Civil 3D



# Technical Deliverables

- 👉 This presentation
- 👉 [Click for Geoff's Cadline Community mini-site](#)
- 👉 Click for Autodesk ReCap blog site: [Reality Computing](#)
- 👉 Masterclass Document



## Call to Action



- 👉 Book a FREE Technical Discovery meeting
- 👉 Speak to your Account Manager
- 👉 Complete the request form in your packs

### Book your FREE Business Discovery Meeting

Book a free Business Discovery Meeting to see how the team can help you by calling us on **01784 419922** or **complete a brief online form**.



A close-up photograph of a pocket watch. The watch has a white face with black Roman numerals and a small sub-dial at the bottom showing a moon phase. The watch is set against a warm, orange-to-red gradient background. A semi-transparent purple horizontal band is overlaid across the middle of the image, containing the text "Thank you for your time".

Thank you for your time