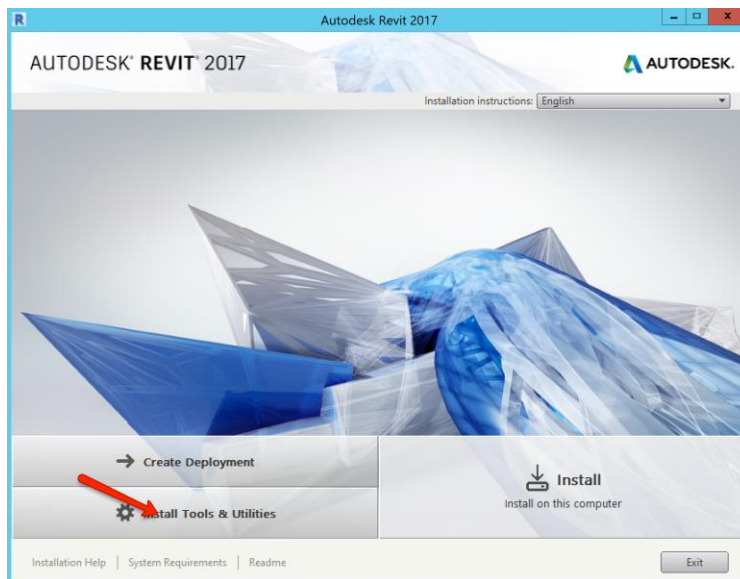


# Revit Server – Basic Installation Guide

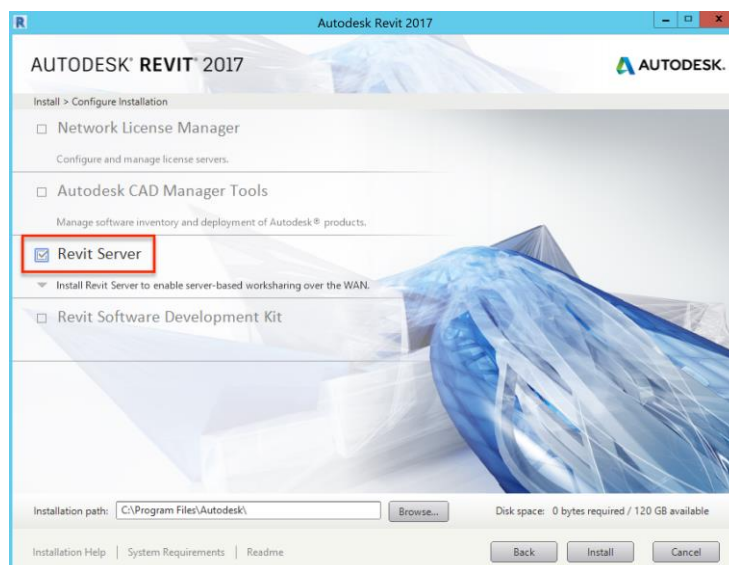
**Note:** Before you run the Revit Server installation, make sure that the server’s IIS prerequisites have been installed:

<https://www.cadlinecommunity.co.uk/hc/en-us/articles/205017752-Revit-Server-System-Prerequisites-for-Windows-Server-2012->

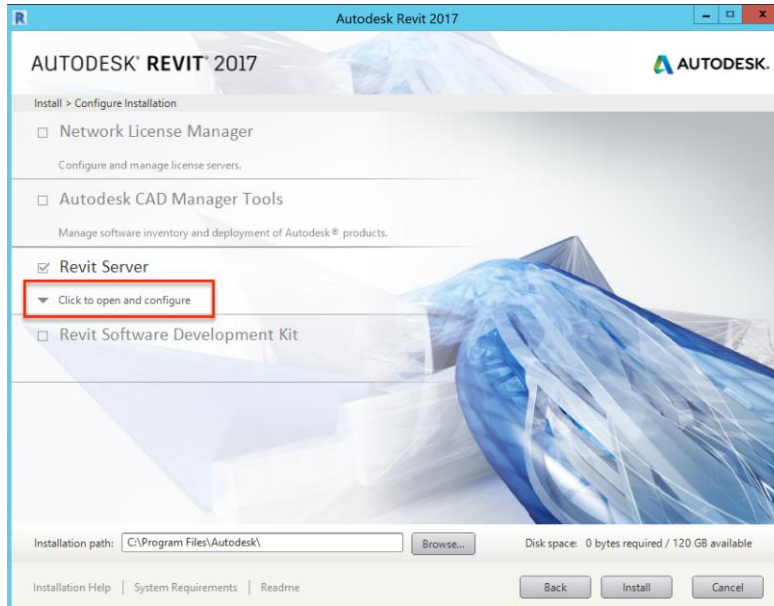
- Launch Revit 2017 setup.exe and select “Install Tools & Utilities”



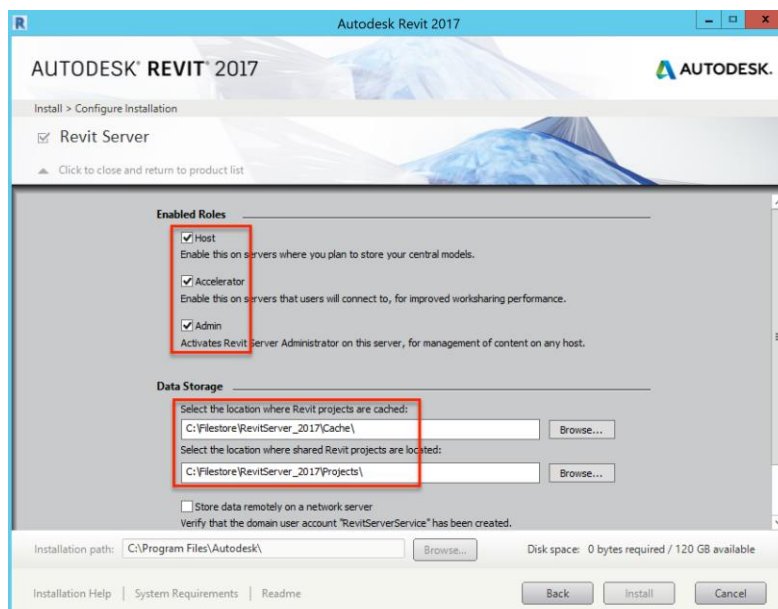
- Accept the License Agreement
- Select Revit Server



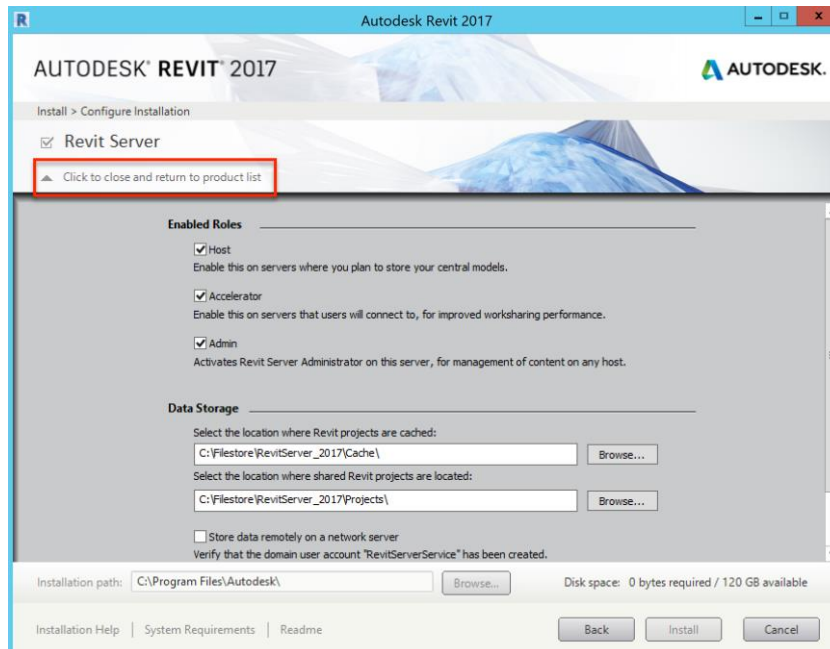
- Select Click to open and configure



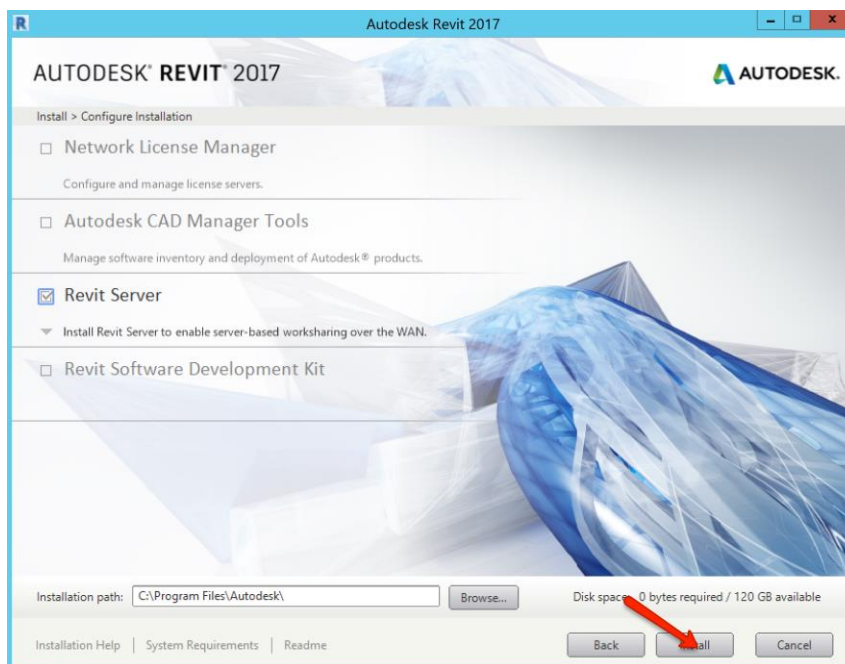
- Select all three roles and your data storage location



- Click to close and return to product list



- Select Install

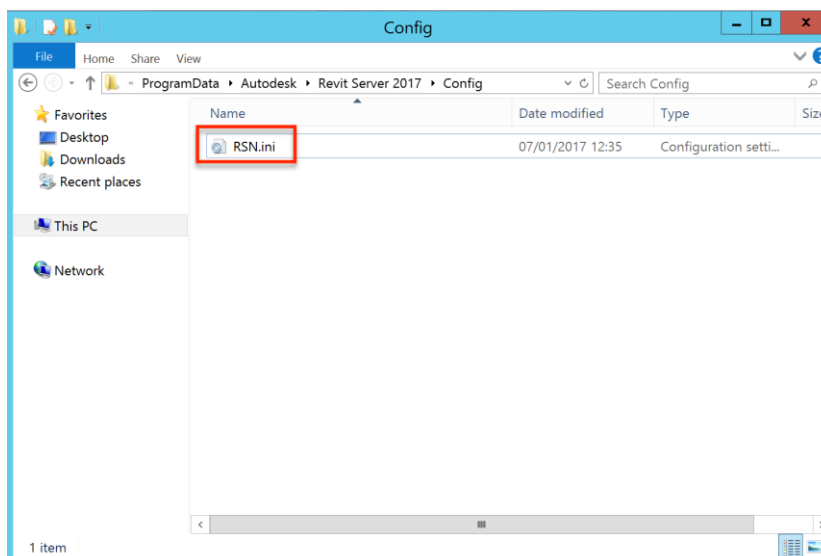
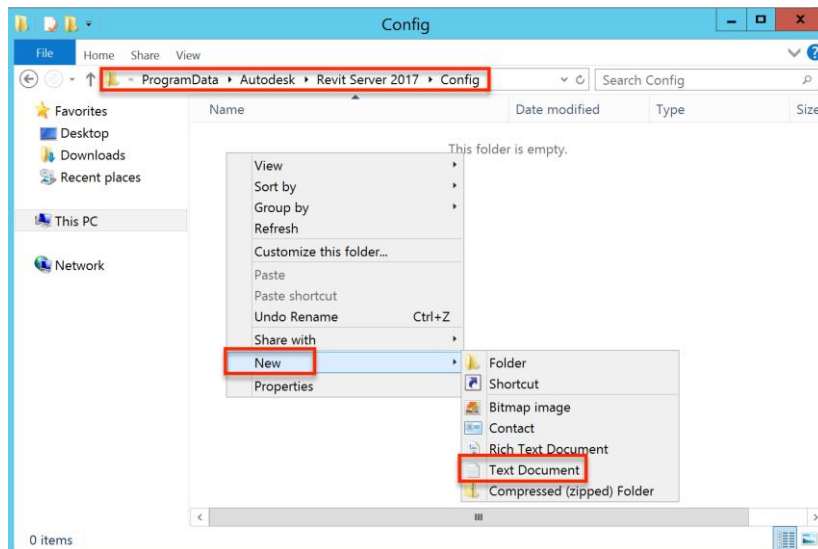


After the installation has completed, the Revit.ini file needs to be created on the server and copied to each of the client machines, located:

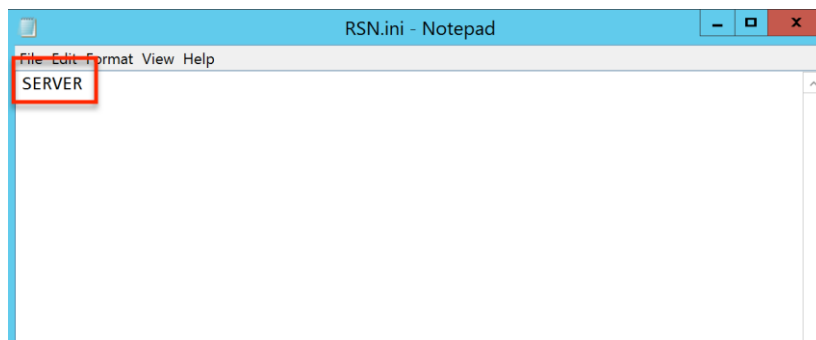
- C:\ProgramData\Autodesk\Revit Server 2017\Config

To create this file:

- Create a new text document in this location and name it, RSN.ini



- Open the file with notepad and enter the server's hostname



- Exit and save the notepad file

The installation of Revit Server is now complete and you can start to create projects using the Administrator Console.

