

elecworks™ Tips & Tricks

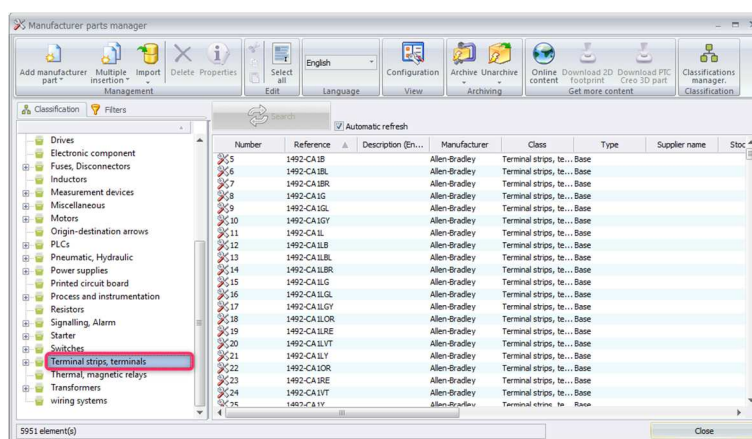
Creation of a New Terminal within the Manufacturers Parts Database

In this Tips and Tricks, we are going to show how to correctly create and define a new terminal within the manufacturers parts database. The particular terminal chosen is a double deck terminal so the article shows how to define terminal levels as well.

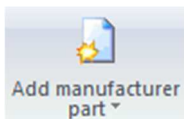
Accurate information is essential for accurate information to be supplied in the reports such as Bills of Materials



From the *Library* ribbon within elecworks™, select

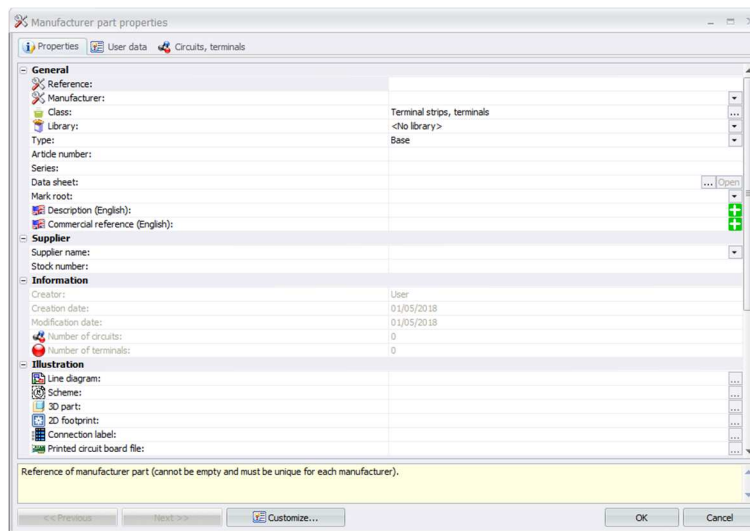


Select *Terminal strips, terminals*



Select *Add manufacturer part*





Define the following:

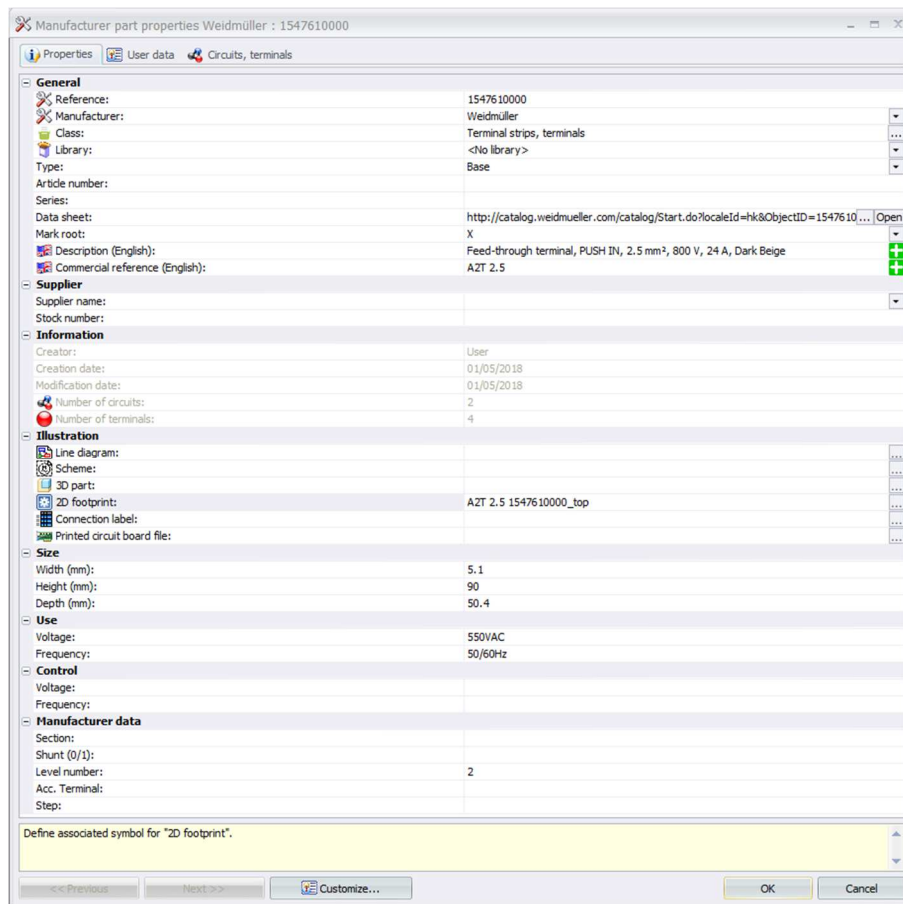
Reference: 1547610000
 Manufacturer: Weidmuller
 Class: Terminal strips, terminals
 Type: Base
 Data Sheet: <http://catalog.weidmuller.com/catalog/Start.do?localeId=hk&ObjectID=1547610000>
 Mark Root: X
 Description (English): Feed-through terminal, PUSH IN, 2.5 mm², 800 V, 24 A, Dark Beige
 Commercial Reference: A2T 2.5


Illustration:
 2D footprint: A2T 2.5 1547610000_top.DWG
 (This can be added later after a footprint has been created/downloaded)

Width (mm): 5.1
 Height (mm): 90
 Depth (mm): 50.4


Use > Voltage: 550VAC
 Use > Frequency: 50/60Hz

Manufacturer Data:
 Levels: 2



Select  Circuits, terminals tab

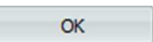
Select 

Select 

Change the number of circuits to “2”

Number	Circuit type	Number of circuits	Number of terminals per circuit
1	Terminal	2	2

Select 

Select  again