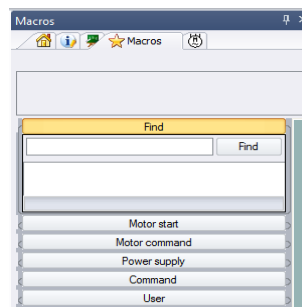


# elecworks™ Tips & Tricks

## Saving a Circuit

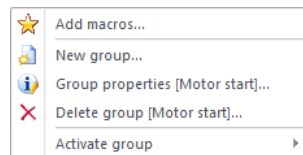
A circuit can be saved as a macro for reuse within the current project and/or other projects. As it is saved as a circuit, it can be edited after insertion including deleting or adding components/wires.

To create a macro (circuit), open the drawing which contains the circuit you wish to store in the library. In the *Side Panel*, select the *Macros* tab

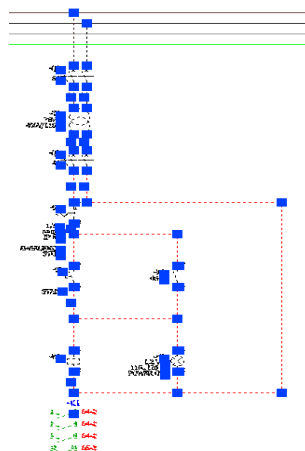


Choose the most appropriate group e.g. Motor command

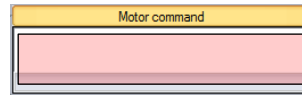
You can *right click* to create your own *NEW* group



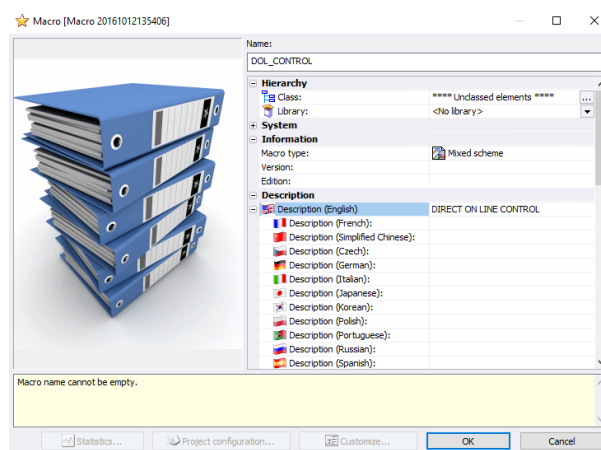
Using a *selection window* (left to right) or a *crossing window* (right to left), select the elements that make up the circuit. They will be highlighted as shown.



Left click over a wire on any part of the highlighted circuit and drag into the appropriate macro group e.g. Motor command specifically into the blank area highlighted

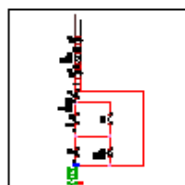


Enter an appropriate Name and Description



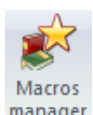
Select 

A thumbnail of the circuit will now appear in the *Macros Side Panel*



To insert into either the existing current drawing or new drawing within a different project, just *double left click*.

To alter the *Macro* (circuit) at any time, select the *Library* tab



Select **Macros manager**

Highlight the specific macro, right click and then 