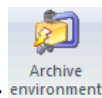


elecworks™ Tips & Tricks

Archiving and Unarchiving

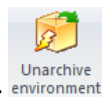
Archiving and unarchiving tools are available for all of your data content within elecworks. Whether you are passing data from one user to another (if installed standalone) or whether you wish to work from home then elecworks provides the necessary tools to duplicate your data.

Total Archive

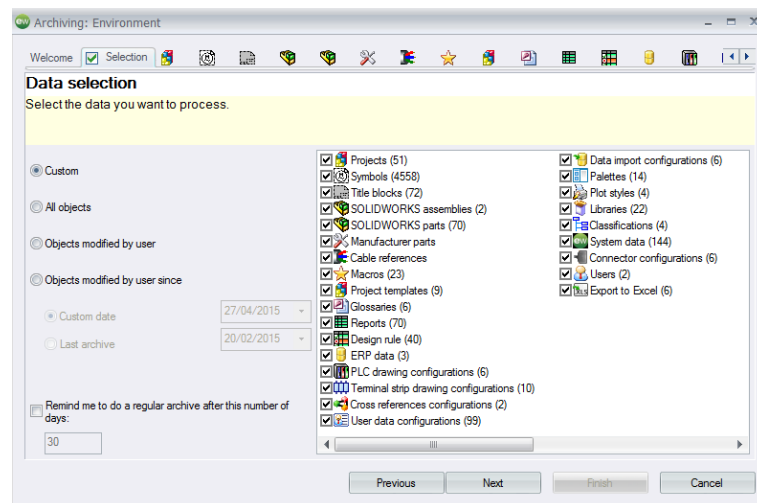


From the *File* ribbon tab > *Archive Environment*

Total Unarchive




From the *File* ribbon tab > *Unarchive Environment*



You can select what you want to archive and unarchive but it gives you the ability to do everything. Please note that this will take a long time but it is worth it periodically if you are running as a standalone installation.

Libraries

Libraries are broken down into schematic symbols, footprint symbols, title blocks, macros, cable references, &

manufacturers parts references. For each type, you can highlight multiple items and select the  *Archive* or

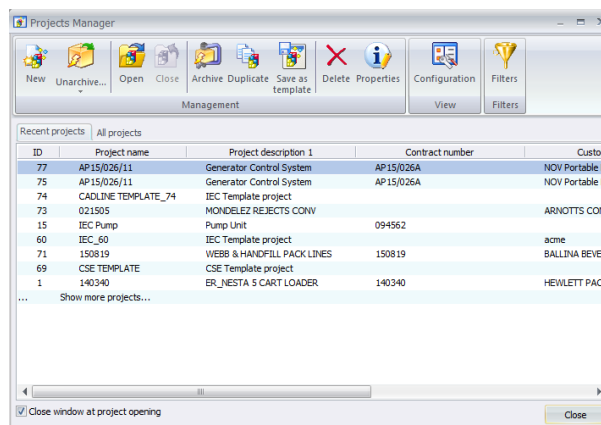


Unarchive options. Select the *Library* ribbon tab.

Projects

An individual project can be archived and unarchived. This is not only useful for passing between PC's but also might be requested from support.

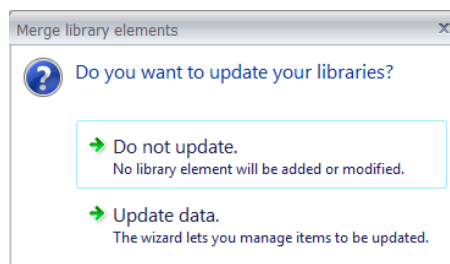
The project must be closed from the documents browser in order that you can archive.



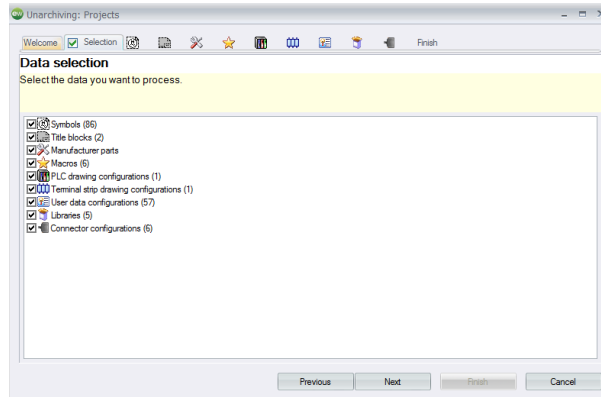
Select *Archive* to archive the highlighted project



Select *Unarchive* to unarchive a project. When unarchiving you have the option of including the symbols, parts and other project related files that are defined in the archived project and adding them to your current PC



If you select → *Update data*, you can decide what data you would like to import

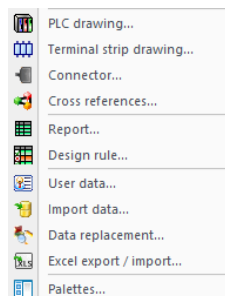


Configurations

For configuration files to be archived and/or unarchived a project has to be activated.



From the *Project* ribbon tab > **Configurations** *Configurations* ↓



PLC drawing, Terminal strip drawing, Connector, Cross reference, Reports, Design rules, User data, Data



replacement, Excel export / import & Palettes all have an **Archive** *Archive* and **Unarchive** *Unarchive* options. You can also archive/unarchive the application settings or the specific projects settings.

