

elecworks™ Tips & Tricks

elecworks™ 2016 Service Pack 4 is NOW Available

This new release includes three main optimised features, making elecworks™ 2016 easier to use, quicker and feature rich software. These new enhancements guarantee users a continuously improved experience for automation and electrical project design.

PTC® Creo® Integration Now Improved

Working with elecworks™ and PTC® Creo® becomes easier thanks to extra automated features of integration. Focusing on productivity and reducing time, elecworks™ now includes the following enhancements:

- Improved cable routing, developed to speed up design process
- More intuitive cable origin/destination assignment process, with a new step-by-step parameter form
- Better management of add-in dialogue within PTC® Creo®



Improved reports for Location information in BOM – Bill of materials

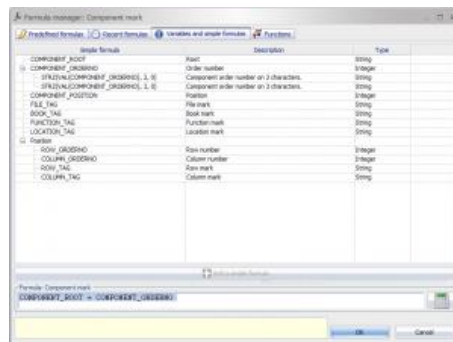
In addition to the existing powerful, customisable BOM report features, elecworks™ 2016 now integrates location marks and location descriptions of components. This new feature provides users with more accurate and relevant details about the components used within the project.

The new Service Pack also implements a brand new *List of Locations* report. This can be accessed from within the report manager and the reports created as an external file or drawing.



New Customisable Variables For Numbering Formulas

elecworks™ 2016 is delivered with a large number of predefined formulas. Additionally, when customised formulas are needed, users can create their own through the *Formula Manager*. The new Service Pack brings new variables for column and row marks in addition to existing column and row numbers.



Users with active subscription can download this new version from [Trace Software support site](#) or directly from the software. Not under subscription? [Please contact our sales team!](#)