

Exporting Markers to a Label Printing Machine

AutoCAD Electrical 2018

Labelling of your equipment is time consuming (up to 40% of manufacturing time), error prone (consistency issues with the schematics) and expensive (last minute label requirements and cost of setup of printing). There are many manufacturers of label printing machines such as Critchley, Markin Genius, Chembre, Murrelektronik, Raychem, Wago & Weidmuller to name a few. Many companies prior to AutoCAD Electrical would often manually produce a report or drawing to provide to a label manufacturer. Even after deployment of AutoCAD Electrical, the benefit of exporting your label requirements to a labelling machine can be overlooked because it is a different departments responsibility.

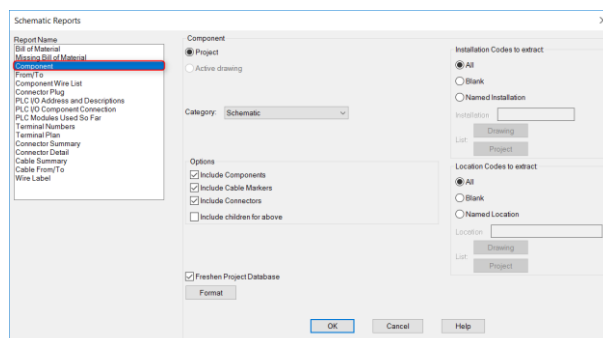
However, this is not to the benefit of the company.

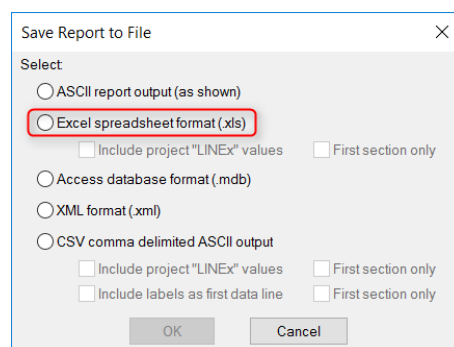
Component markers



Select *Components*

Choose the options you want such as whether you want labels for connectors and cables. You may wish to run a duplicate report just for cable markers.



Select Select Change Fields to Report to *TAGNAME*Select Select 

Most modern labelling software will accept an Excel (XLS) import. You will need to consult your labelling company or labelling machine for details.

Select *Excel spreadsheet format (XLS)*Select

Save to a temporary directory

Terminal Markers

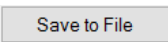
Select Select *Terminal Numbers*Select Select Select

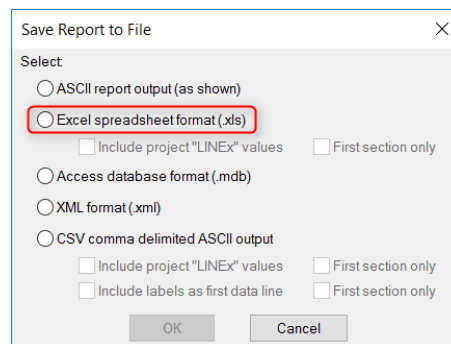
Select *Change Report Format*

Change Fields to Report to *STRIP-ID, WIRENO & TERM.*

N.B. Some label machines will only be able to import the TERM value and not the strip-id. Some terminals will have the WIRENO only value.

Select 

Select 




Most modern labelling software will accept an Excel (XLS) import. You will need to consult your labelling company or labelling machine for details.

Select *Excel spreadsheet format (XLS)*

Select 

Save to a temporary directory

Wire / Pipe Markers

Select 

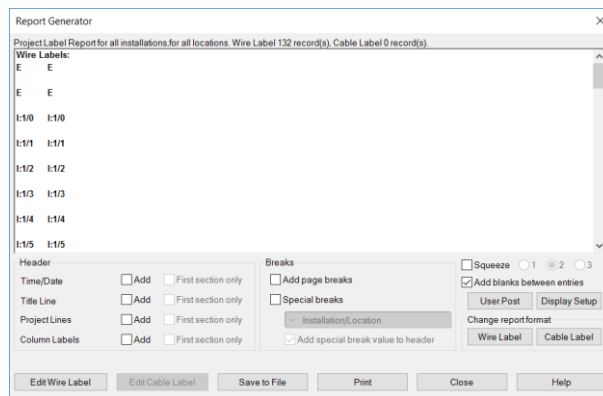
Select *Wire Labels*

Select 

Select 

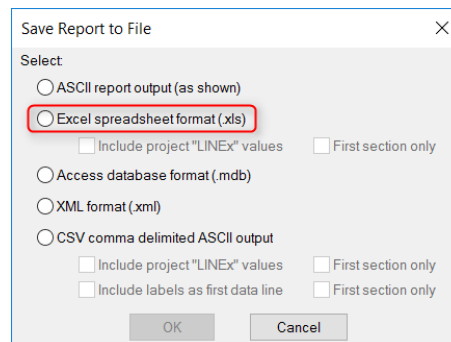
Select 

N.B. AutoCAD Electrical will automatically produce two wire / pipe markers per physical wire / pipe piece.



If you wish to have the from / to information as the wire numbers or included in the wire number tag, select **Wire Label** and you can change the fields to report and the separators.

Select **Save to File**



Most modern labelling software will accept an Excel (XLS) import. You will need to consult your labelling company or labelling machine for details.

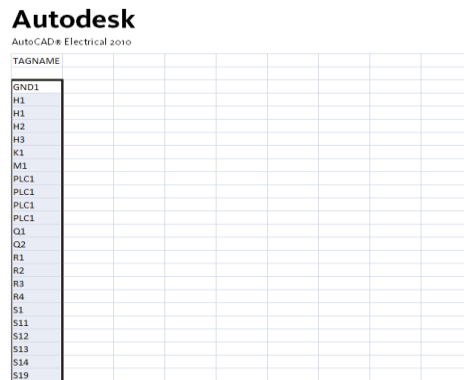
Select **Excel spreadsheet format (XLS)**

Select **OK**

Save to a temporary directory

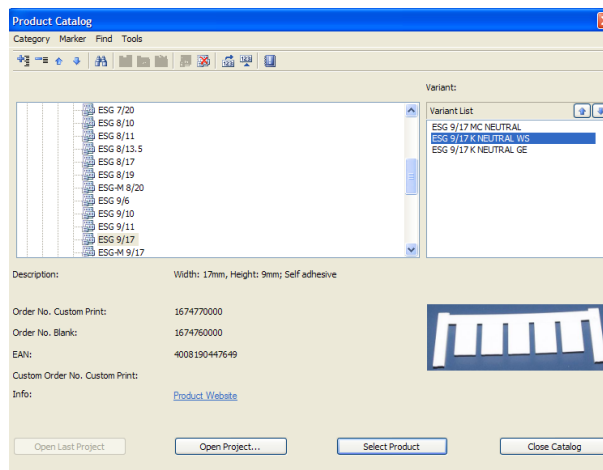
In this example, we will import into the **Weidmuller PrintJet Pro** system but the procedure can generally be applied to most of the other labelling machines on the market.

Open the Excel spreadsheet containing your markers and highlight the labels



Select *Edit > Copy*

Start-up your labelling software
Choose the correct label type you want



Select *Edit > Paste* and your markers will now be ready to print!

