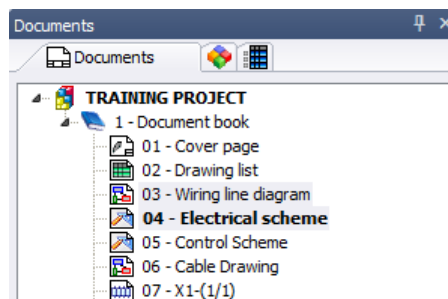


elecworks™ Tips & Tricks

Change the Location Associated with One or More Drawings

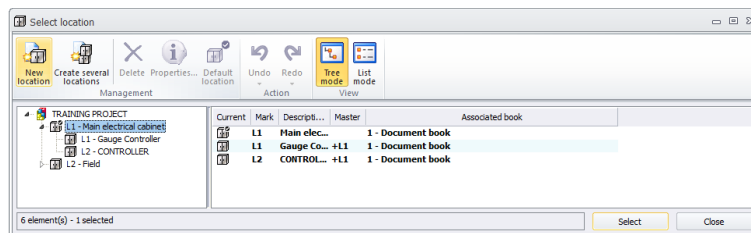
This feature is especially useful when you want to globally change the function and/or the location previously defined within a project. If however you are wanting to copy multiple drawings and paste within the same project with a different function and/or location, then the command “Paste Special” would be utilised.

You can highlight multiple drawings in your project

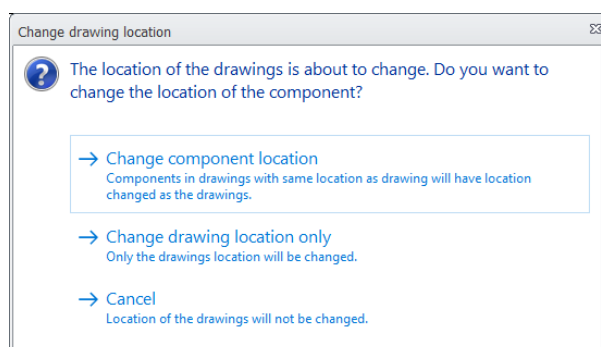


Right click and select  **Change location...**

You can either select an existing *Location* or create a new location



Select  to change



→ Change component location

This option changes the default location of the drawing but also changes the location of components within the drawings that have the default location of the drawing

→ Change drawing location only

This option changes the default location of the drawing but does not change the location of components within the drawings

Select → *Change component location*

The drawing default and component locations have now been changed

 *Change function...* has the same feature as  *Change location...* but for function

