

Revit Server – Client Access

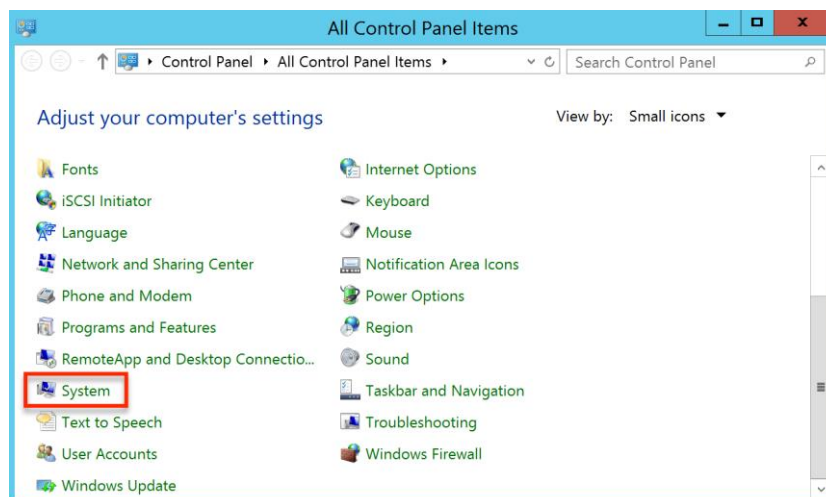
Before you can use Revit Server on the client machines, you need to make sure that the RSN.ini file and Accelerator System Variable has been set.

The RSN.ini file can be copied from the server to the client from the location:

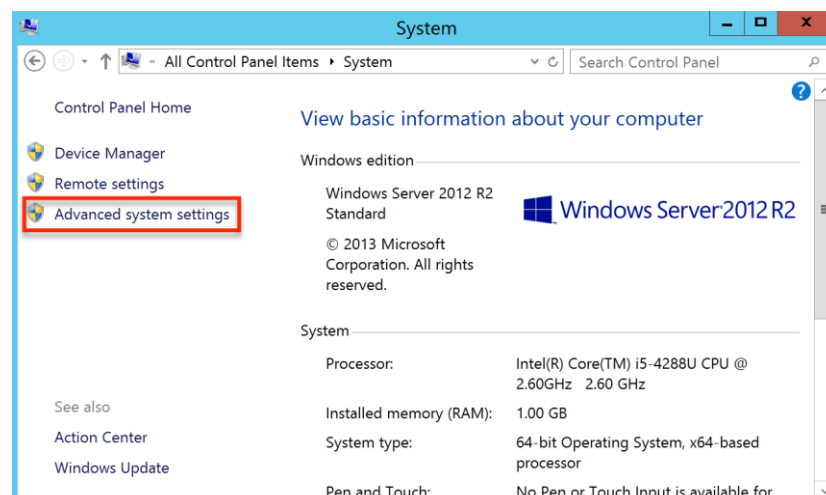
- C:\ProgramData\Autodesk\Revit Server 2017\Config

To add the environment variable:

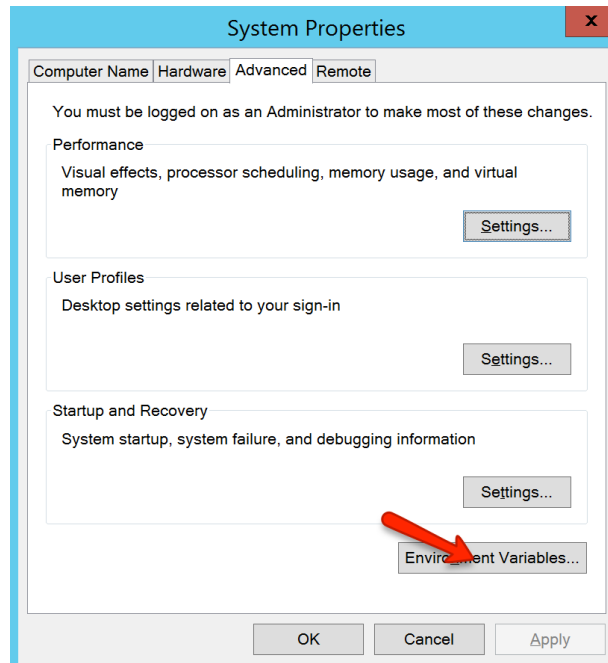
- From the Windows Control panel, select the System applet



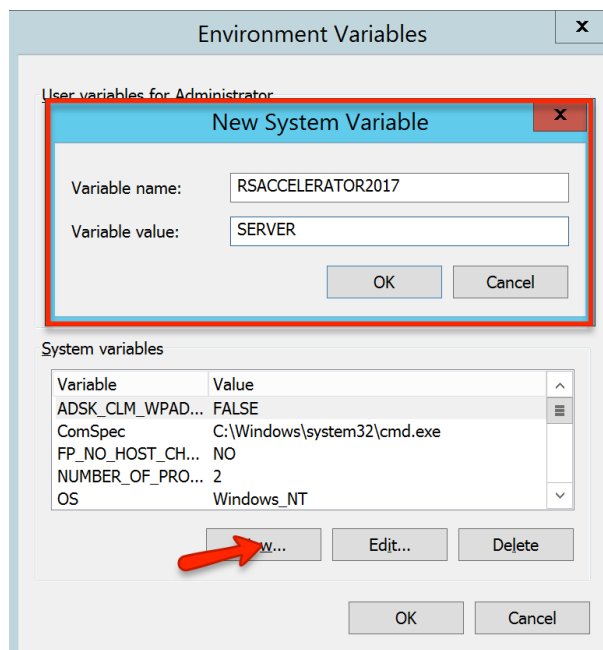
- Select Advanced system settings



- Select Environment Variables



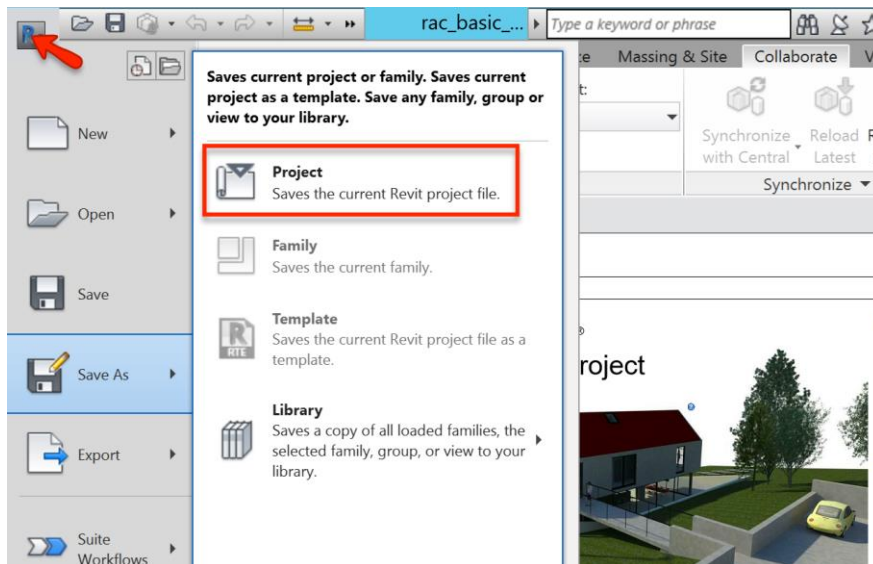
- Under System variables, select New
 - o Variable name: RSACCELERATOR2017
 - o Variable value: <ServerName>



- Select OK, to complete entry

You can now start to save your Revit files in to Revit Server. Before the Revit Server option is available within the “Save” command, you need to enable Revit Worksharing.

- To save a Project, simply select Save As >> Project



- Select Revit Server >> ServerName >> Project and select Save

